

nashuatec

TOTAL DOCUMENT SOLUTIONS



CP6346



CONTINUOUS PRODUCTIVITY
FOR PROFESSIONAL PRINT

Demonstrate cost-effectiveness with increased flexibility

In a highly competitive and cost conscious marketplace, Central Reprographics Departments (CRD) and Quick Printer Service Bureaus are driven to turn jobs around faster, whilst maintaining quality and controlling operational costs. Balancing customer demand for quickly-produced, high-volume documents, against financial targets requires reliable and cost-effective production devices.

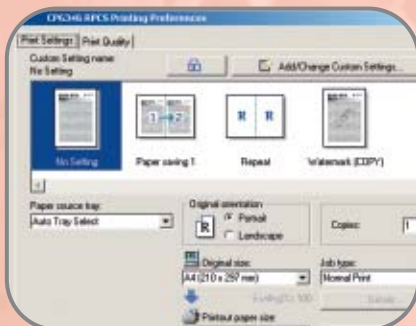
With fast job turnaround, and paper handling flexibility, the CP6346 is the essential solution for busy and successful print production environments. This productive CopyPrinter can handle up to 250,000 sheets per month allowing you to accept more print jobs and improve your revenue stream.

New levels in print quality and network connectivity mean you can effectively service even more customers. With low running costs you can effortlessly consolidate the CP6346's strengths to gain that vital competitive advantage.



Nashuatec's unique approach links people with knowledge and expertise, combining our wide experience of innovative, document related Products and Software solutions with our world class Business and Professional Services to deliver the best Total Document Solutions for your business.

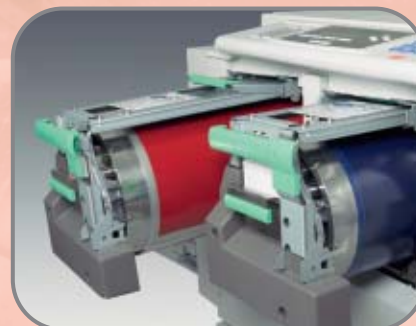
Print documents in your preferred format with the easy-to-use RPCS printer driver



Even under close inspection your print output is of extremely high quality



Print two colour jobs simultaneously with the optional TC-IIR unit



The highest quality CopyPrinting

Revolutionary high-quality inks and master provide fantastic image quality at true 600dpi, excellent solid fill, smooth halftone, crisp photographic images and perfect reproduction of fine text and lines. You can now print a wide range of documents such as company stationery, newsletters, flyers, tickets and menus meeting all your customers' demands.

Incredible productivity

High-volume production print services are under increasing pressure to deliver on-time, on-budget and with more value. The considerable productivity and cost advantages of CopyPrinter technology can contribute to improve profit margins. The CP6346 easily meets these demands by printing at 8,100 A4 sheets-per-hour, ensuring productive workflow, combined with the benefit of lower running costs. Furthermore, pre-press downtime is minimized - unlike litho printing, there is no need to create plates and make-readies.

Network connectivity for up-to-date production

Offering ease of use, enhanced output, particularly with complex graphics, control over settings, and greater productivity, the CP6346 offers a variety of connectivity options. The RPCS print driver, which can also be combined with an optional PostScript module and Hard Disk Drive (HDD) unit, allows you to print documents direct from the network, whenever required.

Minimal user intervention

Benefit from your CP6346 immediately with the easy and intuitive touch-screen control panel. Documents can be produced on a range of stocks, including recycled paper, envelopes and lightweight card with ease. The advanced paper-handling features also provide accurate paper alignment and image registration to ensure professional quality standards. The optional LS3000R Unit expands the paper capacity to a massive 3,000 sheets, ensuring long uninterrupted print runs.

Increase your impact even further with powerful options

Visually, documents with colour are more eye-catching and generate a greater response. Now you can offer your customers the benefits of adding colour to their documents, whilst still maintaining profitability. For added convenience you can print two colours simultaneously with the optional TC-IIR Unit. Nashuatec offers a wide range of standard colour ink, as well as a bespoke service to match your company logos or individual colour needs.

Environmentally focussed

The CP6346's reduced power consumption and noise levels offer quiet operation for a professional printing device, while its natural soya based ink is kind to the environment. The CopyPrinter also complies with future EU legislation, which means no lead, chromium, PVC or cadmium is used during the manufacturing process of this device.

Outstanding Software and Services

Complementing the CP6346, Nashuatec offers a superb range of Software Solutions and Services, which are designed to add value and ensure that our devices continue to operate seamlessly and reliably. Covering all aspects of your business, including document management, network control, consultancy, training and unrivalled support, these innovative products and services offer a tailor made solution to improve productivity, workflow efficiency and cost control throughout your organization.



Produce a wider variety of documents than ever before with the Nashuatec CP6346. From stationery and announcements to posters and menus, the advanced printing processes and flexibility of the CP6346 means that producing these documents is cost effective, simple and reliable.

SPECIFICATIONS

CP6346

Printer

Printer Language

Standard: RPCS™

Option: Adobe® PostScript® 3™

Interface

Standard: USB2.0,

Ethernet100BaseTX/10BaseT

Option: IEEE1284 Parallel Port,

IEEE802.11b Wireless LAN

Memory

Standard: 128MB (Resident 64MB + 64MB additional memory)

Maximum: 320MB with optional memory (128MB or 256MB)

PC Operating Systems

Win 95, 98, Me, NT4.0, 2000, XP, Server2003

Mac OS8.6 - 9.2.2, OSX [10.1 - 10.3, 10.4]

Note: Mac OS only works for PS3

Network Protocol

TCP/IP, EtherTalk, NetBEUI, IPX/SPX, Apple Talk

General

Printing Process

Printer controller built-in, dual cylinder system

Originals

Sheets/Books

Original Size

Platen Glass: Maximum 300mm x 432mm

ADF: Maximum: 297mm x 864mm
Minimum: 148mm x 210mm

Print Paper Size

Maximum: 325mm x 447mm

Minimum: 70mm x 148mm

Print Paper Weights

47 - 210g/m²

Print Area

Maximum: 290mm x 412mm

Print Speed

60 - 135ppm for B4 and below

60 - 120ppm for A3

First Print Speed

19 seconds (A4)

Resolution

Scanning: 600 x 600dpi

Printing: 600 x 600dpi

Paper Capacity

1,000 sheets feed and delivery 80g/m²

Image Position

Vertical: ±15mm

Horizontal: ±10mm

Minimum movable unit: 0.25mm

Image Modes

Letter, Letter/Photo, Photo, Tint and Pencil

Reproduction Ratios

Preset enlargement: 115, 122, 141, 200%

Preset Reduction: 50, 61, 71, 82, 87, 93%

Zoom 50 - 200% in 1% steps

Power Consumption

Master Making: 225W

Printing: 230W (at 135ppm)

Energy saver mode: Below 8W

Power Source

220 - 240V, 50/60Hz

Dimensions (W x D x H)

1,420mm x 705mm x 1,020mm

ADF: 1,420mm x 705mm x 1,130mm

Weight

Platen cover: Below 103.5kg

ADF: Below 110.5kg

Added Value Features

Combine and Image Repeat Modes, Skip Feed, Margin Erase, User Codes, Built in Job Separator, Confidential Mode, Auto Magnification, Directional Magnification, Spot colour printing with optional colour drum units, Overlay Mode, Programme Mode, Class/Memory Mode, Makeup Function, A4 master cut with A3 drum, Auto density control, Double feed detection, Security Mode (Drum Lock, Eject Master box Lock), Energy Saver Mode or Auto shut off mode

TC-IIR – Twin Colour Printing System (Option)

Type

Twin colour press roller printing system

Speed

90 - 120ppm

Printing Paper Sizes

Maximum: 325mm x 447mm

Minimum: 70mm x 250mm

Image Position

Minimum movable unit: 0.125mm

Dimensions (W x D x H)

1,555mm x 630mm x 555mm

Weight

105kg

LS3000R – Large Capacity System (Option)

Configuration

Large capacity input tray - 3,000 sheets feed

Large capacity output tray - 3,000 sheets delivery

Paper Sizes

Maximum: 325mm x 447mm

Minimum: 110mm x 180mm

Options

- 6GB Hard Disc (Document storage, PostScript font installation)
- Platen cover
- 50-sheet Auto Document Feeder
- Cabinets
- Professional Software Solutions

Software

SmartDeviceMonitor™, Web Image Monitor

We reserve the right to make amendments to the technical specifications and external appearance of this equipment. Please note that the full range of options shown in this publication may not always be available. All brand and product names are recognized and hereby acknowledged, as registered trademarks of their respective owners.



Adobe PostScript® 3™



nashuatec

Part of the NRG group



www.nashuatec.com



NPFS34604GBD